



阿拉莫纳公寓

ALA MOANA CONDO

阿拉莫纳公寓
ALA MOANA CONDO

手机 / Cell:
626-866-6888

邮箱 / E-mail:
thlusa@gmail.com

网址 / Web:
www.alamoana-condo.com

地址 / Add:
710 SHERIDAN ST, HONOLULU,
HI 96814, UNITED STATES



CONTENTS

目 录

项目简介
Project Description 1~2

周边环境
Surroundings of the Project 3~4

项目公共配套
Public Facilities of the Project 5~8

项目户型图
Floor Plan of the Project 9~26

项目平面图
Plane Graph of the Project 27~28



ALA MOANA CONDO 项目介绍 / PROJECT DESCRIPTION

项目名称: ALA MOANA CONDO

项目地址: 710 SHERIDAN ST, HONOLULU, HI 96814, UNITED STATES

该项目共有 184 套公寓和一些商业单元。这是一个商业和住宅项目。这座建筑物的总高度约为 250 英尺。包括：

- 1 楼有 3 个零售商业区域，并有一些停车位。
- 2 楼至 5 楼主要是停车场。
- 6 楼主要是公共设施，包括游泳池、业主活动中心、健身房、小电影室、儿童活动区和 4 套公寓。
- 经济适用房在 6 楼 (一个单元)，和 7 至 10 楼。
- 市场价销售的公寓在 6 楼 (三个单元)，和 11 至 27 楼 (没有 13 楼)。
- 项目的停车位和公共设施区域一共约 18 万平方英尺。
- 184 套公寓占地约 14 万平方英尺。
- 商业面积约 7000 平方英尺。
- 这是一个符合酒店物业管理标准的房地产开发项目。
- 项目 2019 年之前已经完成：规划批准、施工图设计、基础工程施工许可证批准、房屋预售许可证。

项目已经于 2019 年 3 月份开工，由于配合夏威夷卫生局土壤报告工程，和 CV-19 影响，项目停止了 3 年，目前已经处理完成土壤报告，目前正在重新调整施工图，重新申请施工许可证。计划重新恢复施工时间：2026 年 5 月，2028 年 12 月建成。

Project Name: ALA MOANA CONDO

Project Address: 710 SHERIDAN ST, HONOLULU, HI 96814, UNITED STATES

The project has 184 condominiums and some business units. It is a commercial and residential project. The total height of the building is about 250 feet.

Including:

- Three retail commercial stores and some parking lots on the first floor.
- Parking lots on the 2nd to 5th floor.
- Public facilities on the 6th floor, including swimming pool, owners' activity center, GYM, small theater, Children's activity area and 4 residential units.
- Affordable housing on the 6th floor (1 unit) to 10th floor.
- Condominiums sold at market price on the 6th floor (3 units) and on the 11th floor to 27th floor (No 13th floor).
- The parking space and public support area of the project is approximately 180,000 square feet.
- 184 condominiums cover an area of approximately 140,000 square feet.
- The commercial area is about 7,000 square feet.
- This is a real estate development project with the standards of hotel property management.
- Projects completed before 2019: Planning approval, construction drawing design, foundation engineering construction permit approval, house pre-sale permit. The project has started in March 2019. Due to cooperation with the soil report project of the Hawaii Health Bureau, and the impact of CV-19. The project has been stopped for 3 years. The soil report has been processed and completed. Currently readjusting construction drawings and reapplying for construction permits. Plan to resume construction time: May 2026, It will be completed in December 2028.



ALA MOANA CONDO 周边环境 / SURROUNDINGS

- 步行 2 分钟即可到达沃尔玛和山姆会员店
- 步行 8 分钟即可到达阿拉莫纳公交（轻轨）
- 步行 10 分钟即可到达阿拉莫纳购物中心
- 步行 10 分钟即可到达多家超市和购物中心
- 步行 15 分钟即可到达阿拉莫纳海滩公园
- 开车 20 分钟即可到达檀香山机场

教育

项目周围有几所小学、中学和高中，包括 10 至 20 分钟车程内的私立学校，如 Lolani 学校和 Punahou 学校。

夏威夷大学——学生：21000 人；最新 US NEWS 排名 156 位。

夏曼纳德大学——学生：1130 人。

夏威夷太平洋大学——学生：8500 人。

杨百翰大学夏威夷分校——学生：2400 人。

- 2 minutes walking to Walmart and Sam's Club
- 8 minutes walking to Ala Moana Transit (Light Rail)
- 10 minutes walking to Ala Moana Shopping Center
- 10 minutes walking to several supermarkets and malls
- 15 minutes walking to Ala Moana Beach Park
- 20 minutes driving to Honolulu Airport

EDUCATION

There are several elementary schools, middle schools and high schools located around the projects, including private schools, such as Lolani School and Punahou School, within 10 to 20 minutes driving.

University of Hawaii – has 21000 students and ranked 156 in most recent US NEWS.

Chaminade University – has 1130 students.

University of the Pacific, Hawaii – has 8500 students.

Brigham Young University- Hawaii Branch- has 2400 students.





阿拉莫纳购物中心 ALA MOANA SHOPPING CENTER



沃尔玛 WALMART



阿拉莫纳海滩公园 ALA MOANA BEACH PARK

ALA MOANA CONDO 公共配套 / PUBLIC FACILITIES

业主活动中心 OWNERS' ACTIVITY CENTER



业主活动中心 OWNERS' ACTIVITY CENTER



儿童活动区 CHILDREN'S ACTIVITY AREA



ALA MOANA CONDO 公共配套 / PUBLIC FACILITIES

健身房 GYM



娱乐室 GAME ROOM



大堂 LOBBY



ALA MOANA CONDO 公共配套 / PUBLIC FACILITIES

小电影室 SMALL THEATER



屋顶露台景观 ROOF VIEW TERRACE



游泳池 SWIMMING POOL



ALA MOANA CONDO 公共配套 / PUBLIC FACILITIES

游泳池 SWIMMING POOL



ALA MOANA CONDO 地理位置 / LOCATION



E-1# 2 BEDS / 2 BATHS / LIVING AREA: 851 SF / LANAI AREA: 85 SF

360-DEGREE VIEW www.alamoana-condo.com



阳台视角 BALCONY VIEW



这是在 2019 年拍摄的 360 全景图像，实景可能会发生变化。This is the 360 panorama image for lanai taken by 2019, the view is subject to change.



提示：以上装饰图片仅供参考，实际装饰可能与本手册部分不符。如果您购买我们的房子，在房子正式装修之前，我们将采用您最喜欢的一些装饰材料 and 颜色。然而，该计划不能改变。如果装修材料超出预算，我们可以通过协商增加合理的材料成本。

Tip: The above decoration pictures are for reference only, and the actual decoration may be partially inconsistent with this leaflet. If you purchase our house, before the house is formally renovated, we will adopt some of your favorite decoration materials and colors. However, the plan can not be changed. If the decoration material exceeds the budget, we can increase the reasonable material cost through negotiation.

G-2# 1 BED / 1 BATH / LIVING AREA: 566 SF / LANAI AREA: 86 SF

360-DEGREE VIEW www.alamoana-condo.com



阳台视角 BALCONY VIEW



这是在 2019 年拍摄的 360 全景图像，实景可能会发生变化。This is the 360 panorama image for lanai taken by 2019, the view is subject to change.



提示：以上装饰图片仅供参考，实际装饰可能与本手册部分不符。如果您购买我们的房子，在房子正式装修之前，我们将采用您最喜欢的一些装饰材料 and 颜色。然而，该计划不能改变。如果装修材料超出预算，我们可以通过协商增加合理的材料成本。

Tip: The above decoration pictures are for reference only, and the actual decoration may be partially inconsistent with this leaflet. If you purchase our house, before the house is formally renovated, we will adopt some of your favorite decoration materials and colors. However, the plan can not be changed. If the decoration material exceeds the budget, we can increase the reasonable material cost through negotiation.

H-3# 2 BEDS / 1 BATH / LIVING AREA: 857 SF / LANAI AREA: 55 SF

360-DEGREE VIEW www.alamoana-condo.com



阳台视角 BALCONY VIEW



这是在 2019 年拍摄的 360 全景图像，实景可能会发生变化。This is the 360 panorama image for lanai taken by 2019, the view is subject to change.



提示：以上装饰图片仅供参考，实际装饰可能与本手册部分不符。如果您购买我们的房子，在房子正式装修之前，我们将采用您最喜欢的一些装饰材料 and 颜色。然而，该计划不能改变。如果装修材料超出预算，我们可以通过协商增加合理的材料成本。

Tip: The above decoration pictures are for reference only, and the actual decoration may be partially inconsistent with this leaflet. If you purchase our house, before the house is formally renovated, we will adopt some of your favorite decoration materials and colors. However, the plan can not be changed. If the decoration material exceeds the budget, we can increase the reasonable material cost through negotiation.

A3-4# 1 BED / 1 BATH / LIVING AREA: 609 SF / LANAI AREA: 55 SF

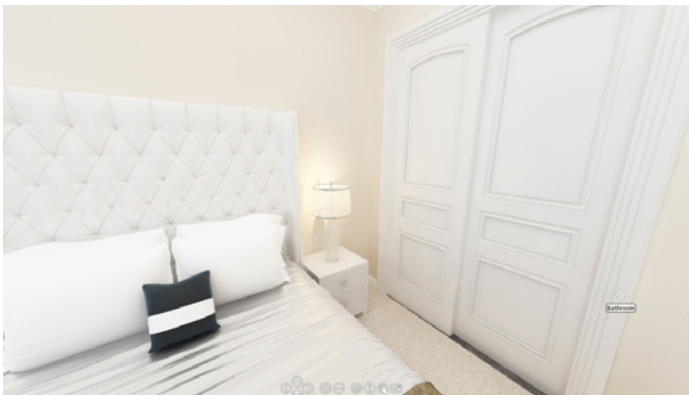
360-DEGREE VIEW www.alamoana-condo.com



阳台视角 BALCONY VIEW



这是在 2019 年拍摄的 360 全景图像, 实景可能会发生变化。This is the 360 panorama image for lanai taken by 2019, the view is subject to change.



提示：以上装饰图片仅供参考，实际装饰可能与本手册部分不符。如果您购买我们的房子，在房子正式装修之前，我们将采用您最喜欢的一些装饰材料 and 颜色。然而，该计划不能改变。如果装修材料超出预算，我们可以通过协商增加合理的材料成本。

Tip: The above decoration pictures are for reference only, and the actual decoration may be partially inconsistent with this leaflet. If you purchase our house, before the house is formally renovated, we will adopt some of your favorite decoration materials and colors. However, the plan can not be changed. If the decoration material exceeds the budget, we can increase the reasonable material cost through negotiation.

B-5# 2 BEDS / 2 BATHS / LIVING AREA: 937 SF / LANAI AREA: 61 SF

360-DEGREE VIEW www.alamoana-condo.com



阳台视角 BALCONY VIEW



这是在 2019 年拍摄的 360 全景图像，实景可能会发生变化。This is the 360 panorama image for lanai taken by 2019, the view is subject to change.

室内设计参考 REFERENCE MAP OF INTERIOR DESIGN

360-DEGREE VIEW
www.alamoana-condo.com



提示：以上装饰图片仅供参考，实际装饰可能与本手册部分不符。如果您购买我们的房子，在房子正式装修之前，我们将采用您最喜欢的一些装饰材料 and 颜色。然而，该计划不能改变。如果装修材料超出预算，我们可以通过协商增加合理的材料成本。

Tip: The above decoration pictures are for reference only, and the actual decoration may be partially inconsistent with this leaflet. If you purchase our house, before the house is formally renovated, we will adopt some of your favorite decoration materials and colors. However, the plan can not be changed. If the decoration material exceeds the budget, we can increase the reasonable material cost through negotiation.

A1-6# 1 BED / 1 BATH / LIVING AREA: 614 SF / LANAI AREA: 55 SF

360-DEGREE VIEW www.alamoana-condo.com



阳台视角 BALCONY VIEW



这是在 2019 年拍摄的 360 全景图像，实景可能会发生变化。This is the 360 panorama image for lanai taken by 2019, the view is subject to change.



提示：以上装饰图片仅供参考，实际装饰可能与本手册部分不符。如果您购买我们的房子，在房子正式装修之前，我们将采用您最喜欢的一些装饰材料 and 颜色。然而，该计划不能改变。如果装修材料超出预算，我们可以通过协商增加合理的材料成本。

Tip: The above decoration pictures are for reference only, and the actual decoration may be partially inconsistent with this leaflet. If you purchase our house, before the house is formally renovated, we will adopt some of your favorite decoration materials and colors. However, the plan can not be changed. If the decoration material exceeds the budget, we can increase the reasonable material cost through negotiation.

A2-7# 1 BED / 1 BATH / LIVING AREA: 603 SF / LANAI AREA: 55 SF

360-DEGREE VIEW www.alamoana-condo.com



阳台视角 BALCONY VIEW



这是在 2019 年拍摄的 360 全景图像，实景可能会发生变化。This is the 360 panorama image for lanai taken by 2019, the view is subject to change.



提示：以上装饰图片仅供参考，实际装饰可能与本手册部分不符。如果您购买我们的房子，在房子正式装修之前，我们将采用您最喜欢的一些装饰材料 and 颜色。然而，该计划不能改变。如果装修材料超出预算，我们可以通过协商增加合理的材料成本。

Tip: The above decoration pictures are for reference only, and the actual decoration may be partially inconsistent with this leaflet. If you purchase our house, before the house is formally renovated, we will adopt some of your favorite decoration materials and colors. However, the plan can not be changed. If the decoration material exceeds the budget, we can increase the reasonable material cost through negotiation.

C-8# 2 BEDS / 2 BATHS / LIVING AREA: 729 SF / LANAI AREA: 44 SF

360-DEGREE VIEW www.alamoana-condo.com



阳台视角 BALCONY VIEW



这是在 2019 年拍摄的 360 全景图像，实景可能会发生变化。This is the 360 panorama image for lanai taken by 2019, the view is subject to change.



提示：以上装饰图片仅供参考，实际装饰可能与本手册部分不符。如果您购买我们的房子，在房子正式装修之前，我们将采用您最喜欢的一些装饰材料 and 颜色。然而，该计划不能改变。如果装修材料超出预算，我们可以通过协商增加合理的材料成本。

Tip: The above decoration pictures are for reference only, and the actual decoration may be partially inconsistent with this leaflet. If you purchase our house, before the house is formally renovated, we will adopt some of your favorite decoration materials and colors. However, the plan can not be changed. If the decoration material exceeds the budget, we can increase the reasonable material cost through negotiation.

D-9# 2 BEDS / 2 BATHS / LIVING AREA: 727 SF / LANAI AREA: 89 SF

360-DEGREE VIEW www.alamoana-condo.com



阳台视角 BALCONY VIEW

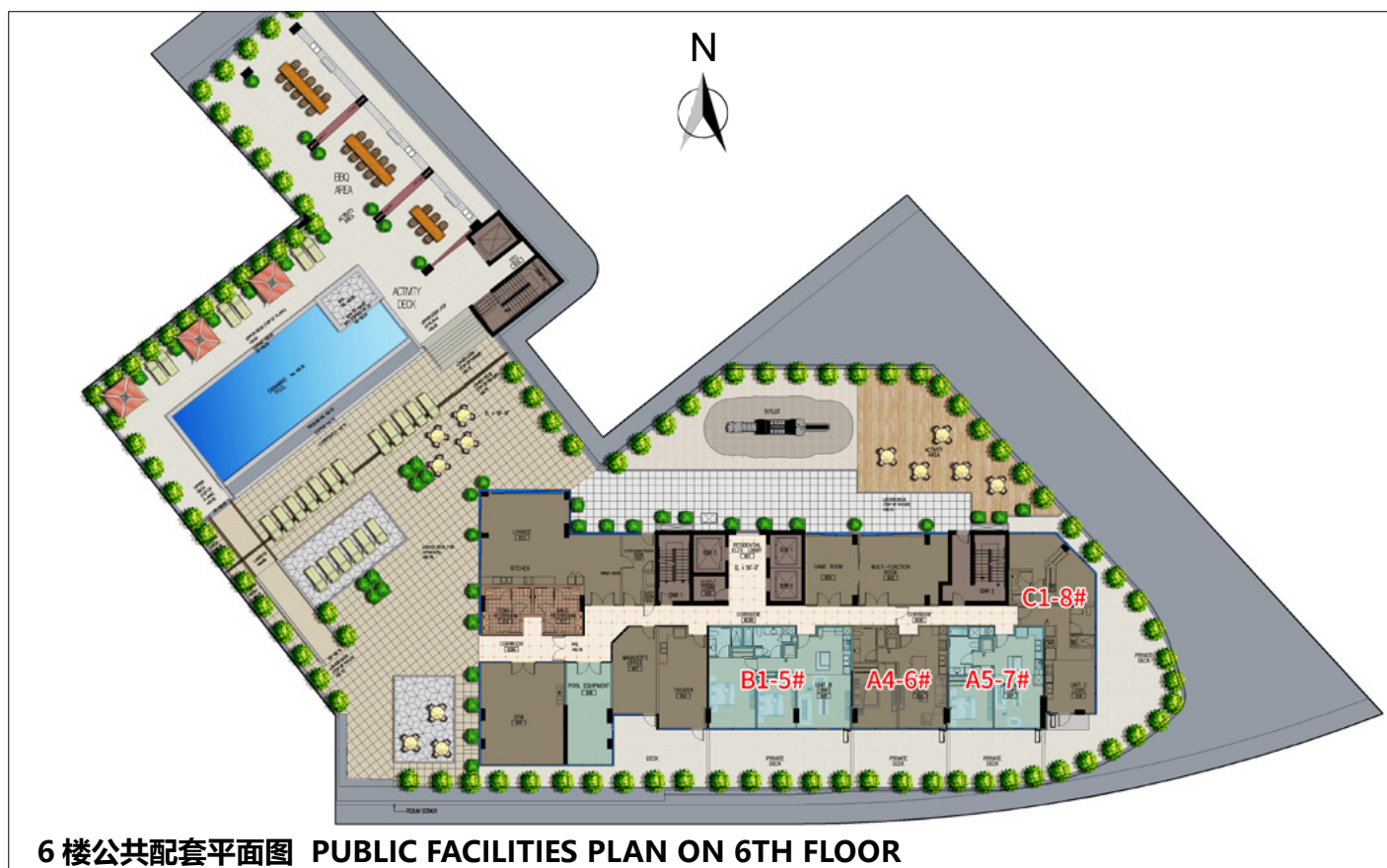
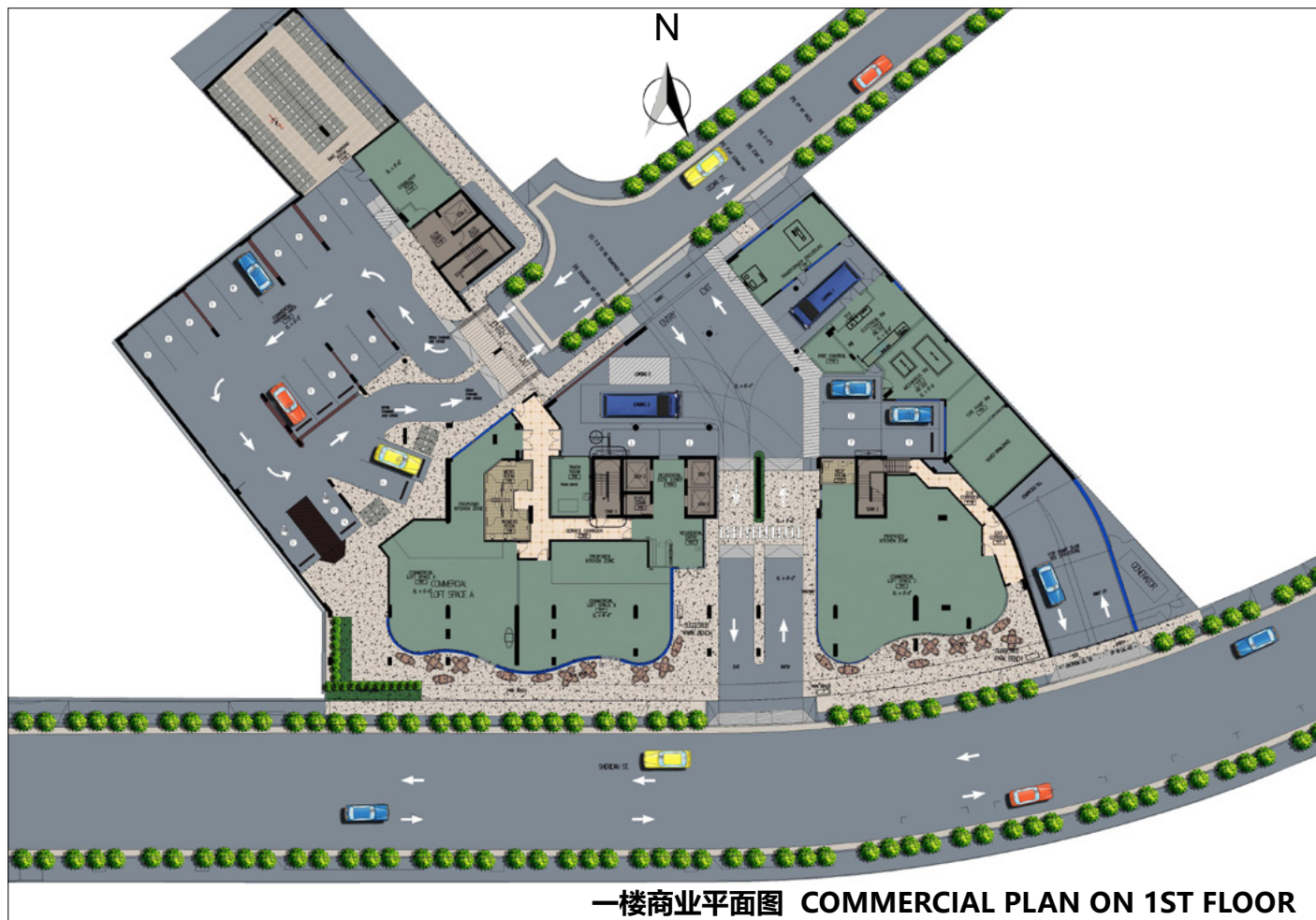


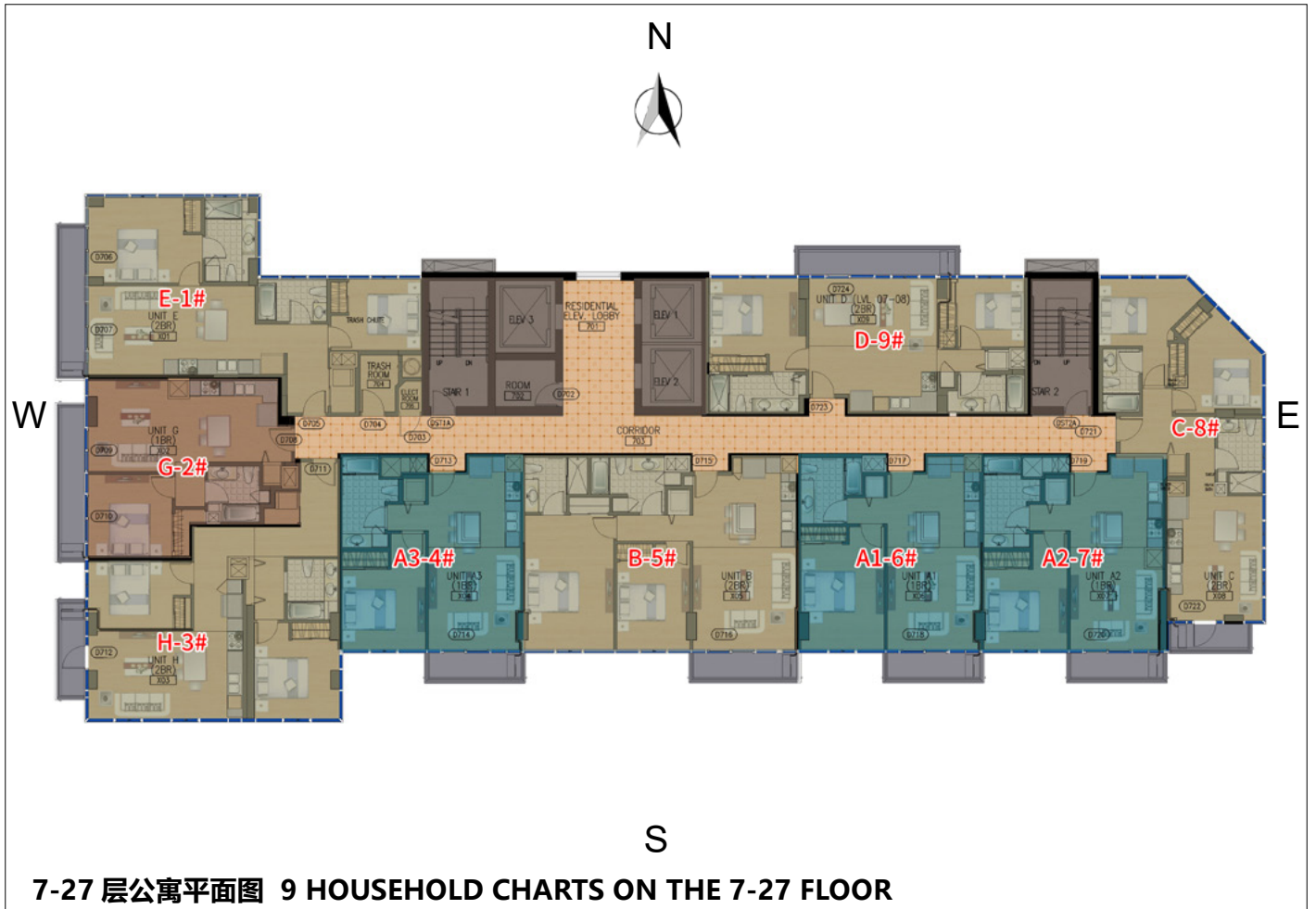
这是在 2019 年拍摄的 360 全景图像，实景可能会发生变化。This is the 360 panorama image for lanai taken by 2019, the view is subject to change.



提示：以上装饰图片仅供参考，实际装饰可能与本手册部分不符。如果您购买我们的房子，在房子正式装修之前，我们将采用您最喜欢的一些装饰材料颜色。然而，该计划不能改变。如果装修材料超出预算，我们可以通过协商增加合理的材料成本。

Tip: The above decoration pictures are for reference only, and the actual decoration may be partially inconsistent with this leaflet. If you purchase our house, before the house is formally renovated, we will adopt some of your favorite decoration materials and colors. However, the plan can not be changed. If the decoration material exceeds the budget, we can increase the reasonable material cost through negotiation.





ALA MOANA CONDO 房型介绍 / RESIDENCE TYPE INTRODUCTION

E-1#	2 BEDS	2 BATHS	LIVING AREA: 851 SF	LANAI AREA: 85 SF
G-2#	1 BED	1 BATH	LIVING AREA: 566 SF	LANAI AREA: 86 SF
H-3#	2 BEDS	1 BATH	LIVING AREA: 857 SF	LANAI AREA: 55 SF
A3-4#	1 BED	1 BATH	LIVING AREA: 609 SF	LANAI AREA: 55 SF
B-5#	2 BEDS	2 BATHS	LIVING AREA: 937 SF	LANAI AREA: 61 SF
A1-6#	1 BED	1 BATH	LIVING AREA: 614 SF	LANAI AREA: 55 SF
A2-7#	1 BED	1 BATH	LIVING AREA: 603 SF	LANAI AREA: 55 SF
C-8#	2 BEDS	2 BATHS	LIVING AREA: 729 SF	LANAI AREA: 44 SF
D-9#	2 BEDS	2 BATHS	LIVING AREA: 727 SF	LANAI AREA: 89 SF